

MSTrIPES Desktop Installation Manual



Wildlife Institute of India



भारतीय वन्यजीव संस्थान
Wildlife Institute of India

Contents

1	System Requirements	3
2	Installation process	3
2.1	Download	3
2.2	Extract installer	4
2.3	Antivirus Settings	5
2.4	Windows Defender Permissions	6
2.5	Install JAVA	7
2.6	Install Postgres	10
2.7	Installation Complete	14
2.8	Application Launch	14
2.9	Application Home	15
3	Post Installation Checks	16
3.1	Database Check	16
3.2	Import GIS Check	17
3.3	Software Update Check	18

1 System Requirements

System Details	Preffered Configurations
OS	Windows-7 64bit or above
Processor	i5 dual core 7th generation or above
RAM	8GB or above
Hard disk	512GB or above

NOTE - For other configurations with lower OS version or processor or memory the application performamance might not be as expected.

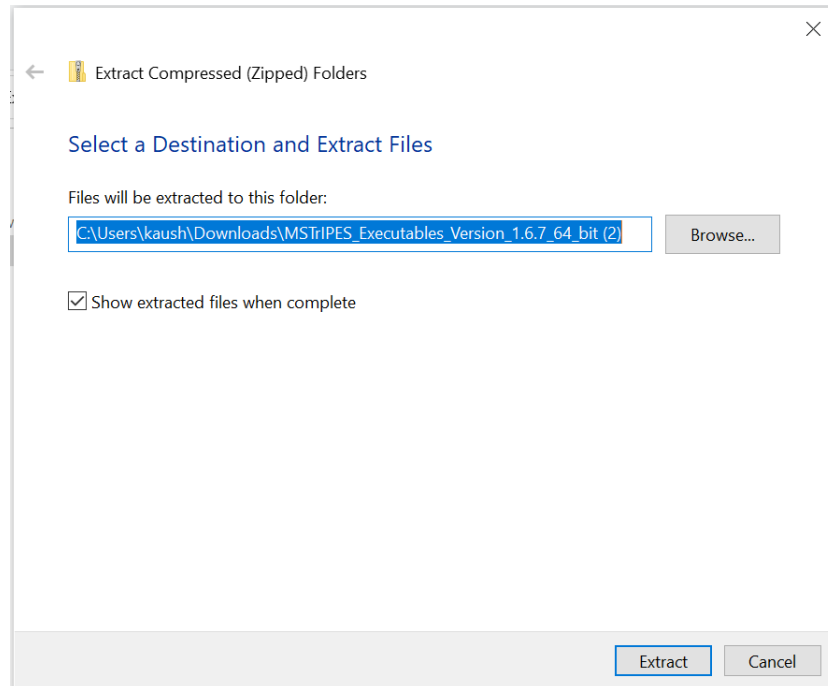
2 Installation process

2.1 Download

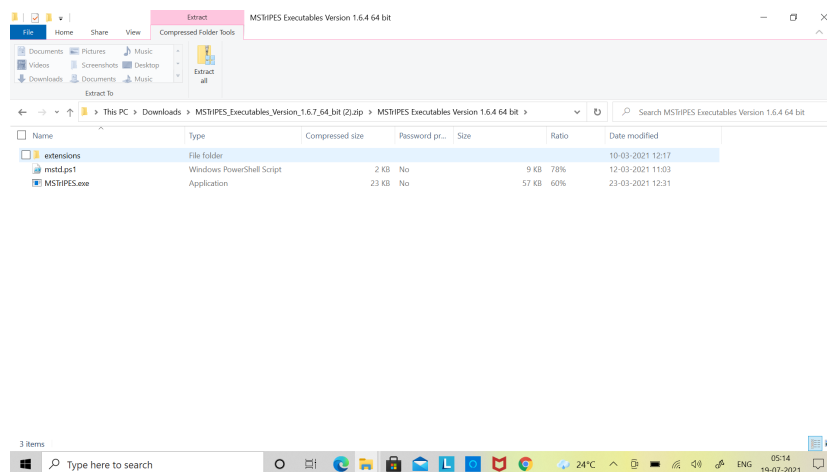
Please download the latest version of the installer from https://projects.kaiinos.com/wii_executables/.
Download the installer Zip file (MSTripES_Executables_Version_A.B.C_64_bit.Zip).

2.2 Extract installer

Extract the MStrIPES Executable to a folder. Select all the folders and click on extract all to extract.



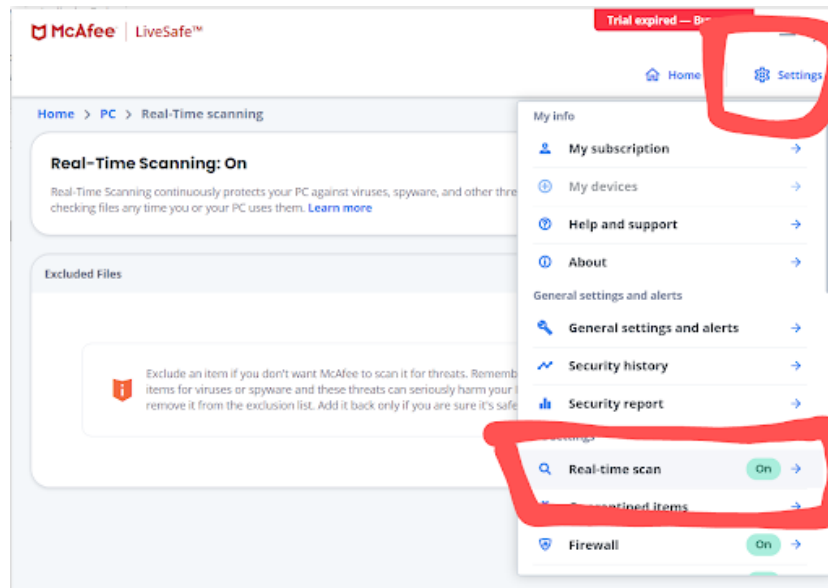
(a) Select Destination



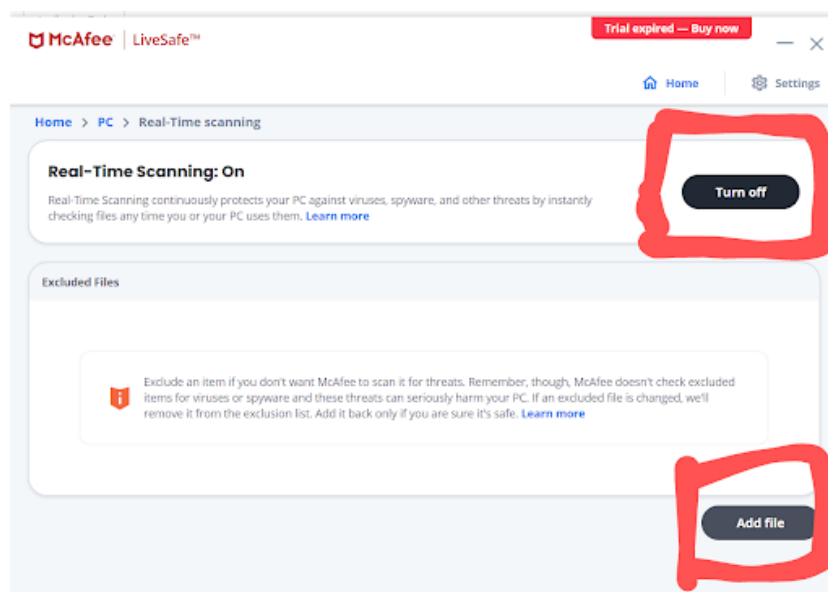
(b) Extract all

2.3 Antivirus Settings

If the system has any antivirus software like McAfee or secureme please disable real time protect during installation or add the MSTripES.exe file to the excluded files.



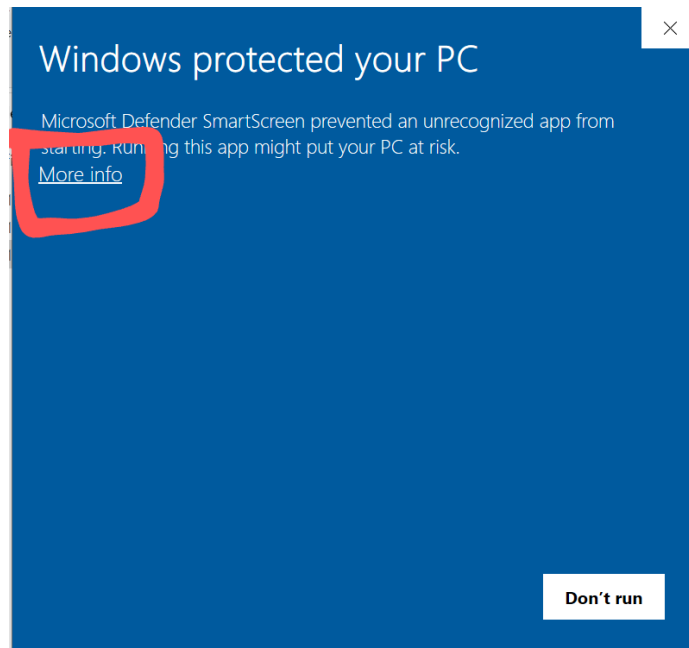
(a) Select Destination



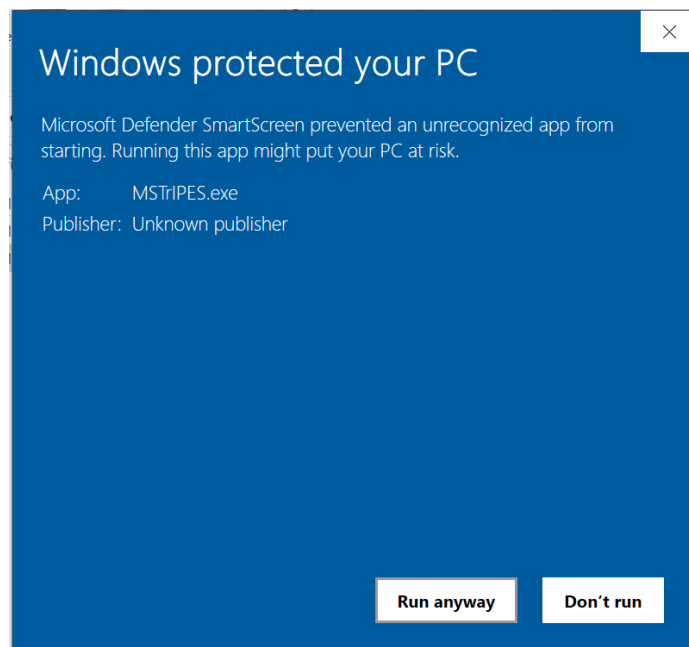
(b) Select Destination

2.4 Windows Defender Permissions

Click on more info and click on Run anyway on windows defender screen to continue installation



(a) Select Destination



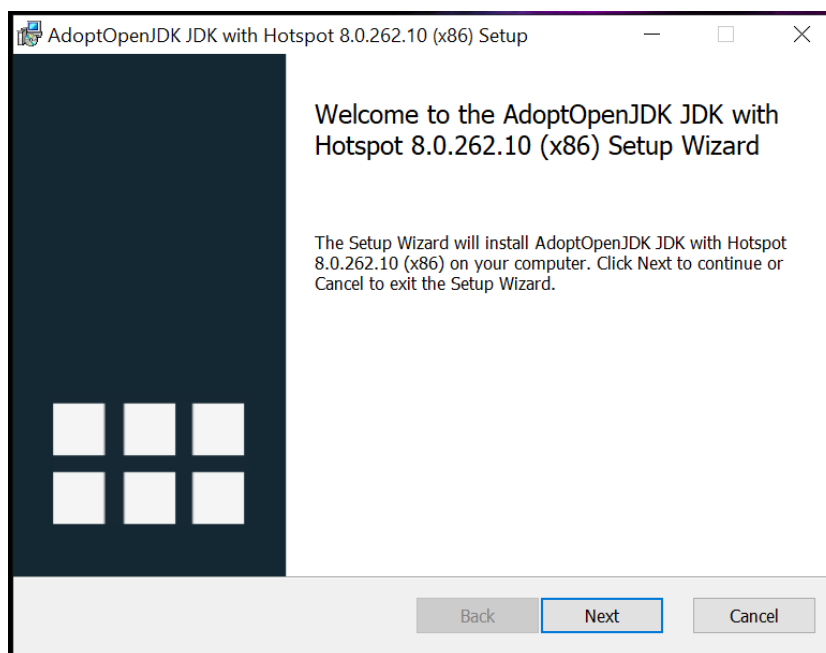
(b) Select Destination

2.5 Install JAVA

Double click on MSTRiPES.exe to run the installer, click on next for adoptOpenJDK then Click on “I Accept the terms in the Licence Agreement” again click on next for custom setup,after that click on Install and then finish after completion.

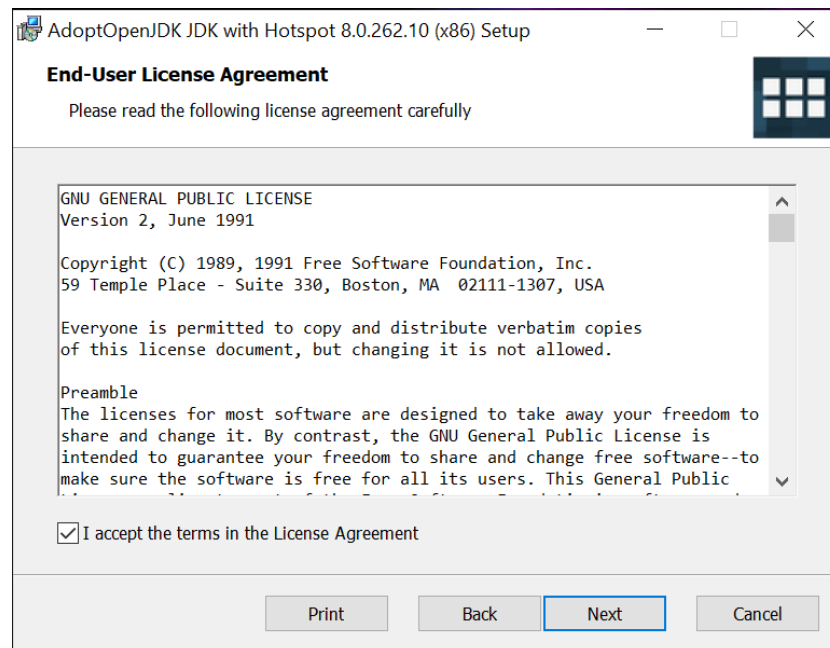


(a) Copying Files

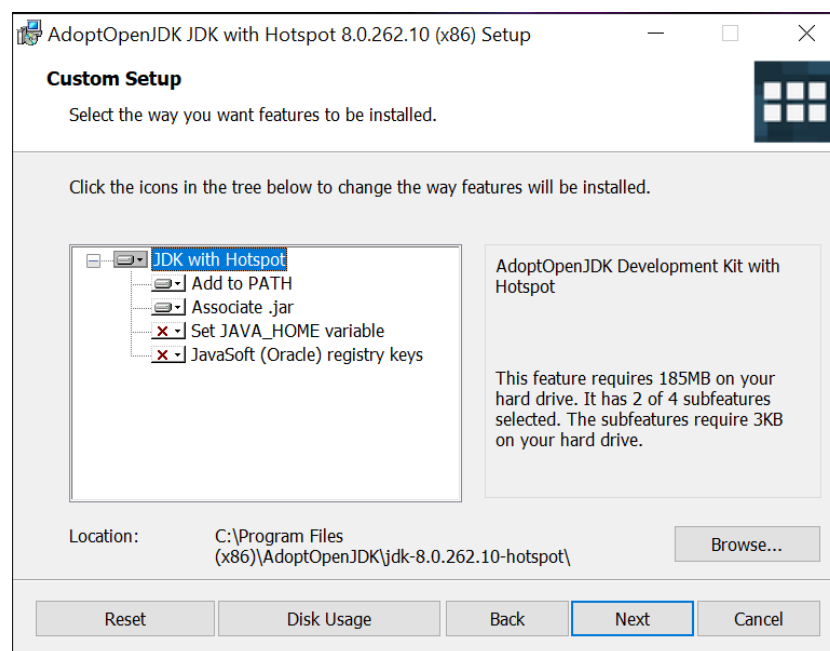


(b) Adopt Open JDK setup

Click on Next

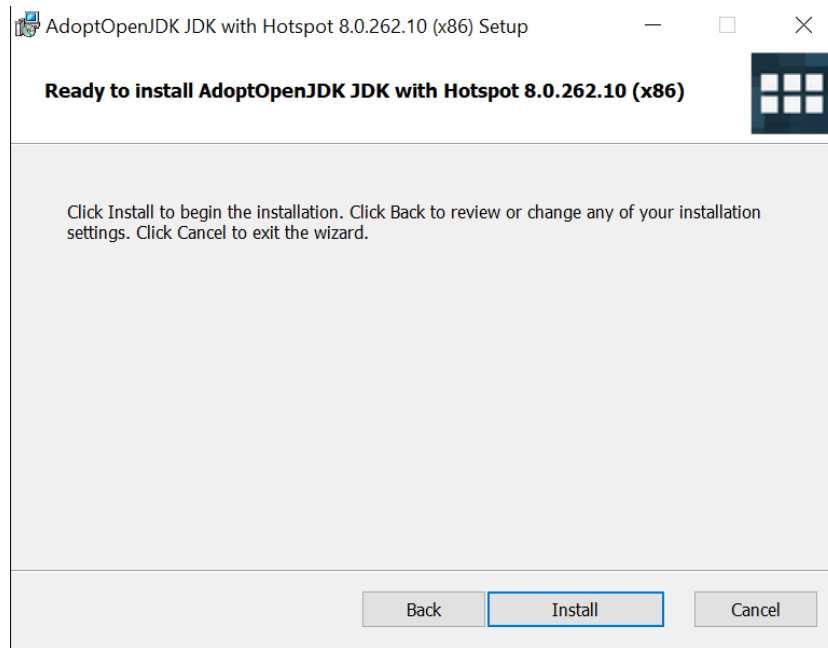


(a) User Licence

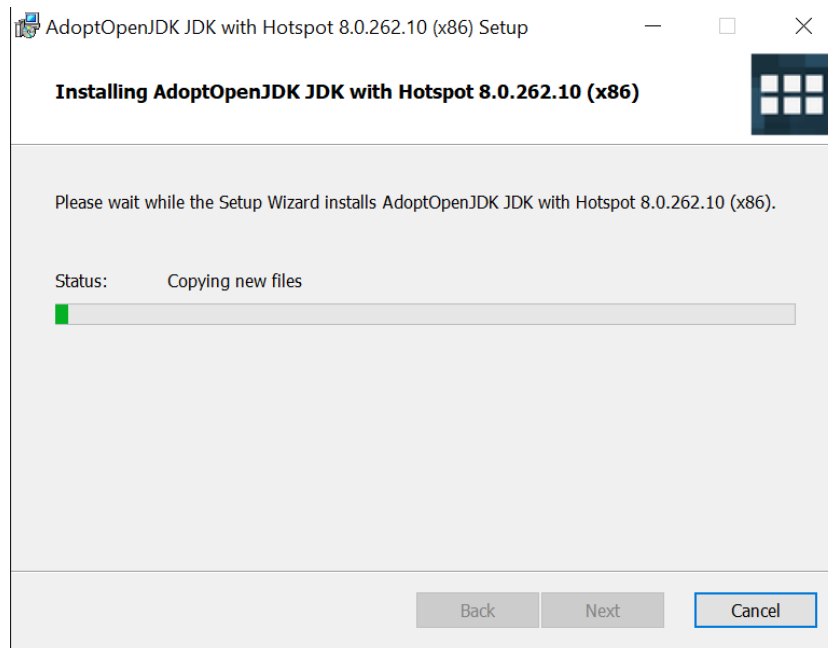


(b) Custom setup

Click on Install

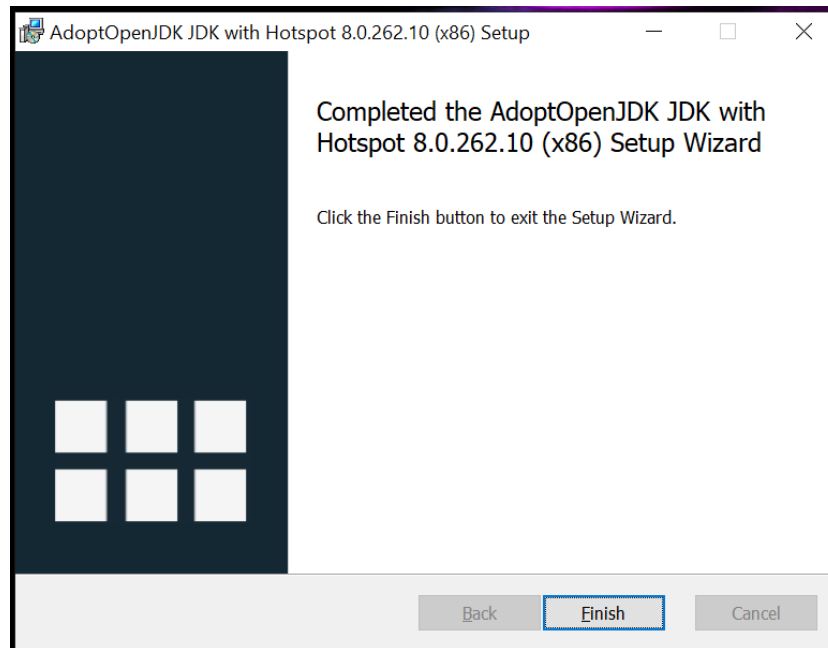


(a) Installation



(b) Installation Processing

Click on Finish

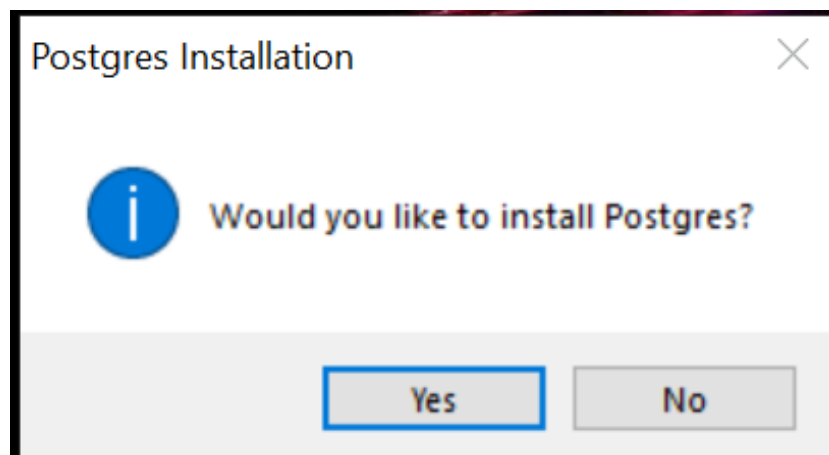


(a) Finish

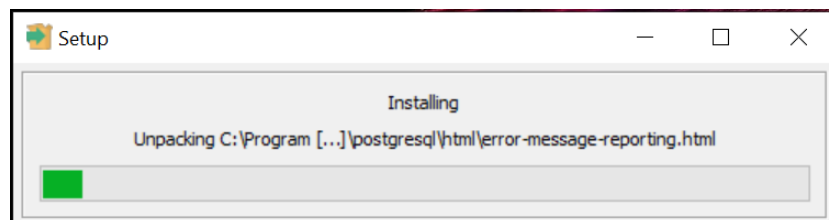
2.6 Install Postgres

Click on yes to install postgres, click "I Agree" for license, click next for components and install location, click on yes for bundle setup and Click on "Close" after completing the installation.

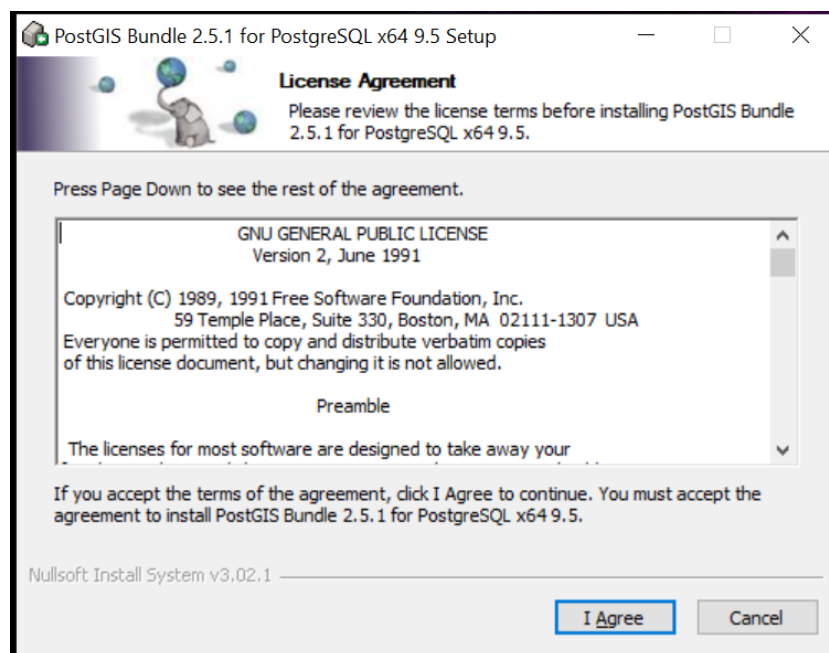
Click on "Yes" and "I Agree" for below screens



(a) Postgres Installation

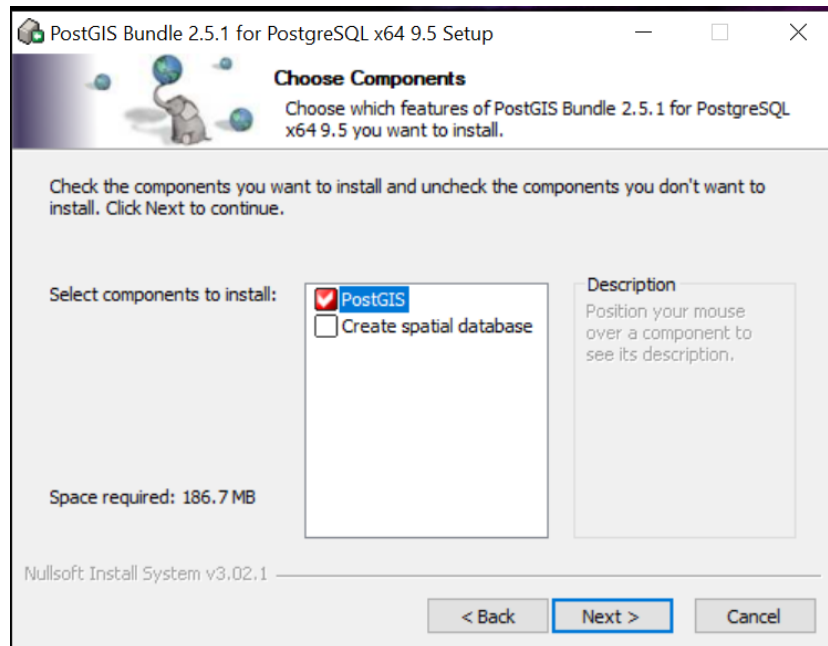


(b) Setup

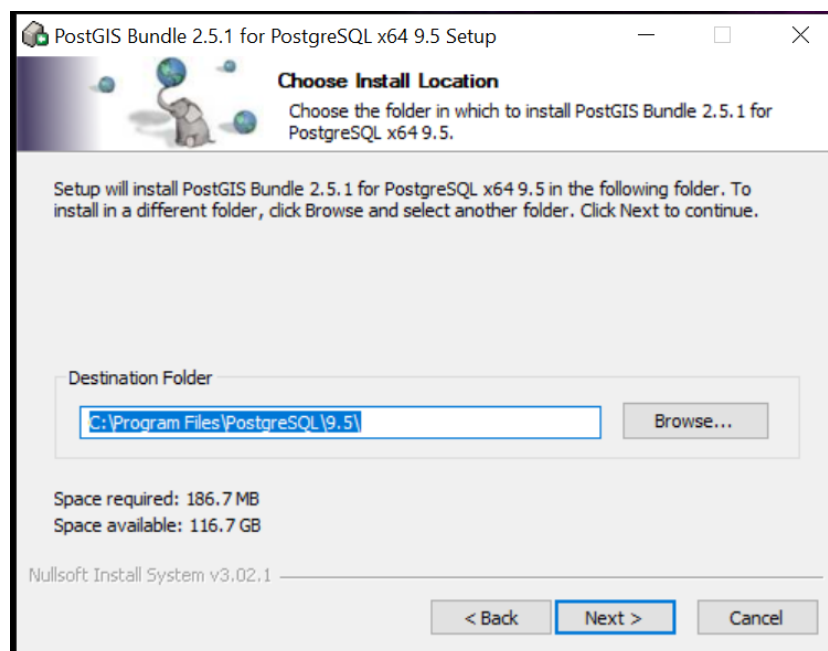


(c) User License

Click on Next for below screens

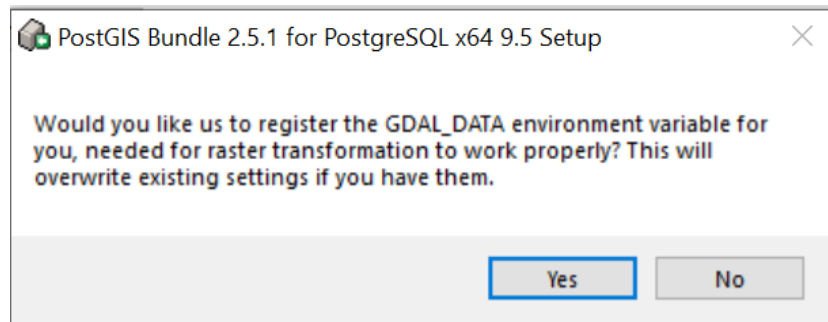


(a) Choose Components

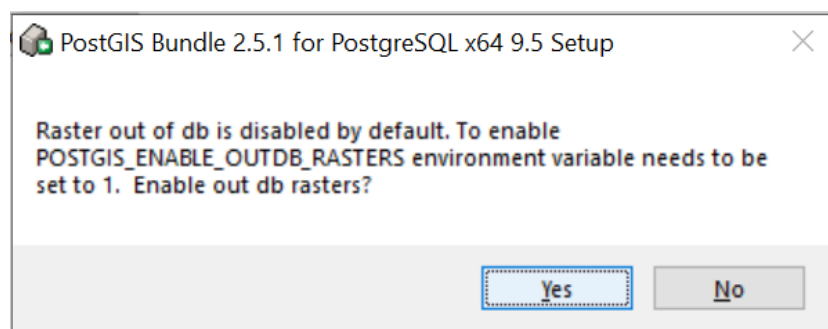


(b) Installation Location

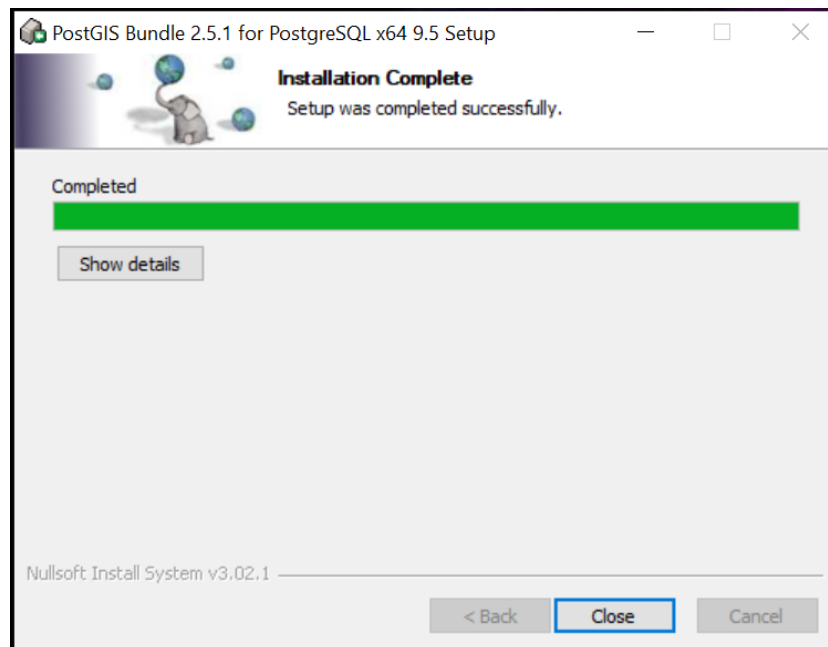
Click on "yes" and "close" for below screens



(a) GDAL DATA



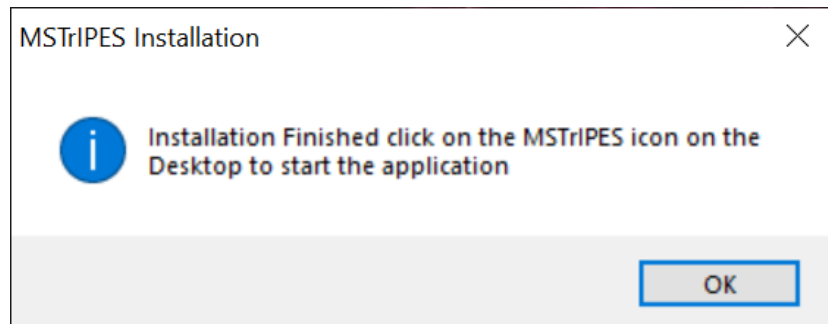
(b) Raster db



(c) Installation Completion

2.7 Installation Complete

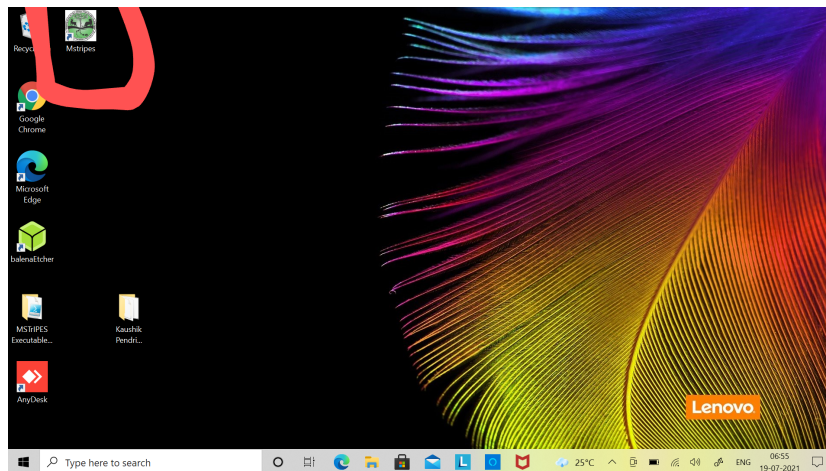
Wait for the Window which shows “Mstripes installation Completed” and Click on “OK”.



(a) complete

2.8 Application Launch

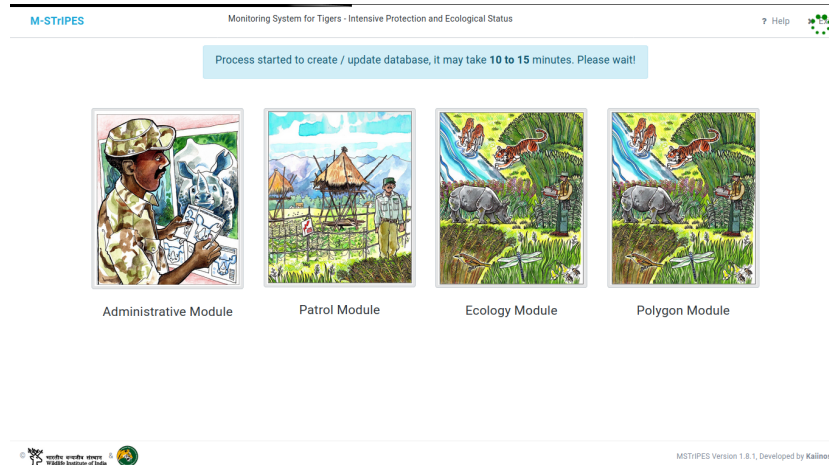
Double click on the MSTripES icon on the desktop to launch the application.



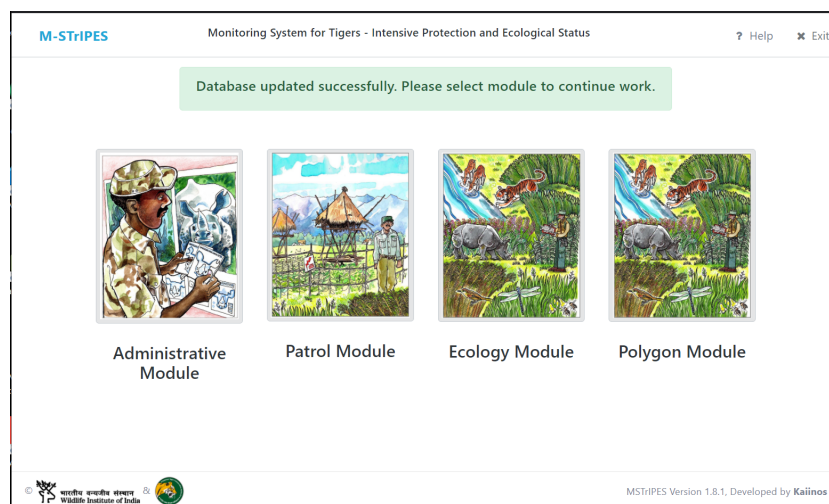
(a) Application Launching

2.9 Application Home

Wait for the application to launch till the database updated successfully as shown below.



(a) Database updation processing

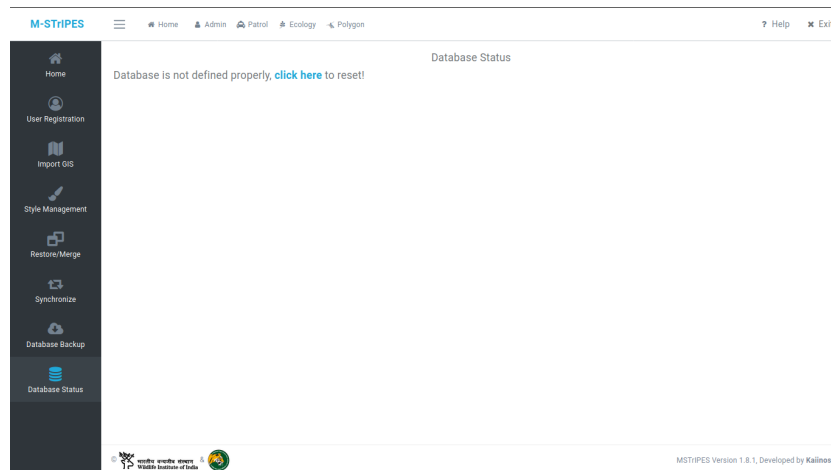


(b) Database updation completed

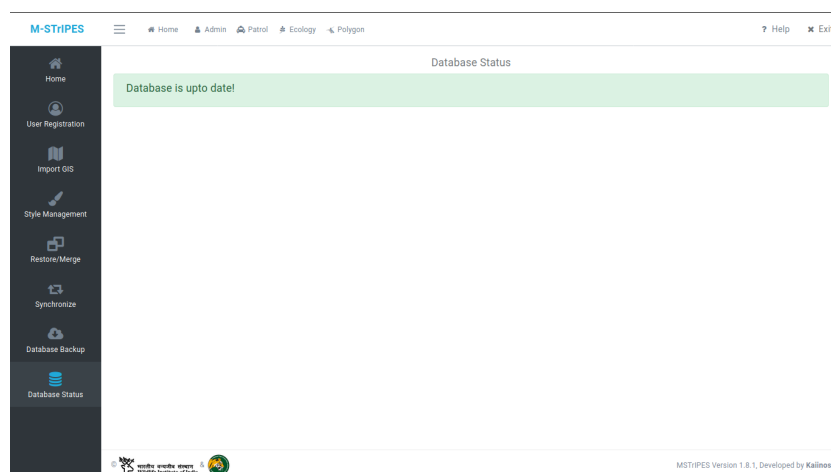
3 Post Installation Checks

3.1 Database Check

Check whether the database is up to date or not by click on admin and then click on data base. If the desktop database is not up to date then we need to update.



(a) Update Database

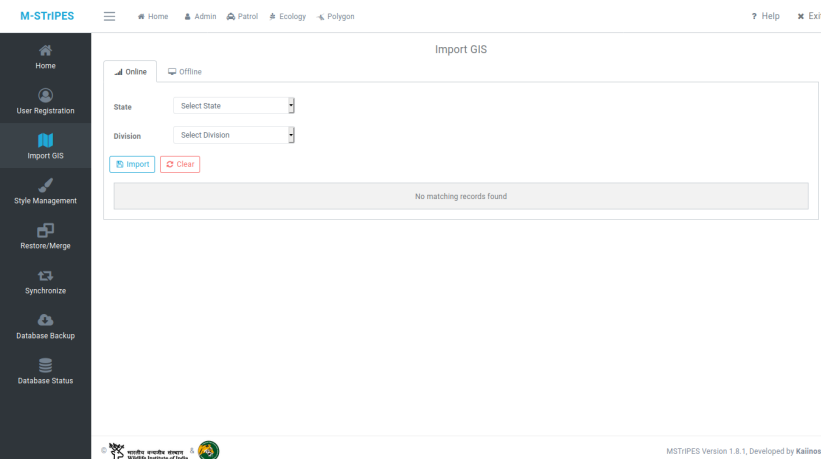


(b) Database upto date

3.2 Import GIS Check

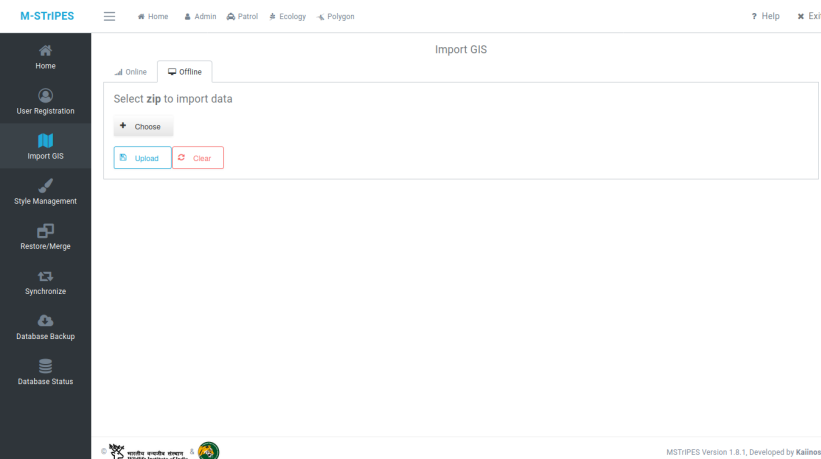
Import GIS enables users to import administrative boundaries like Divisions, Ranges, Beat (shape files) in database format from server. The data imported into a desktop is shown as a list in the same page. This can also be downloaded and shared to other desktops which do not have internet connectivity.

The offline upload expects a zip file exported from other desktop. Once the upload is completed admin boundaries are imported into the local system.



The screenshot shows the 'Import GIS' page in the M-STIPES application. The interface has a dark sidebar on the left with navigation options: Home, User Registration, Import GIS (selected), Style Management, Restore/Merge, Synchronize, Database Backup, and Database Status. The main content area is titled 'Import GIS' and has two tabs: 'Online' (selected) and 'Offline'. Under the 'Online' tab, there are two dropdown menus: 'State' and 'Division', both with 'Select' text. Below these are 'Import' and 'Clear' buttons. A message 'No matching records found' is displayed in a light gray box. The footer shows the M-STIPES logo, version 1.8.1, and 'Developed by Kaiinos'.

(a) Online Import GIS

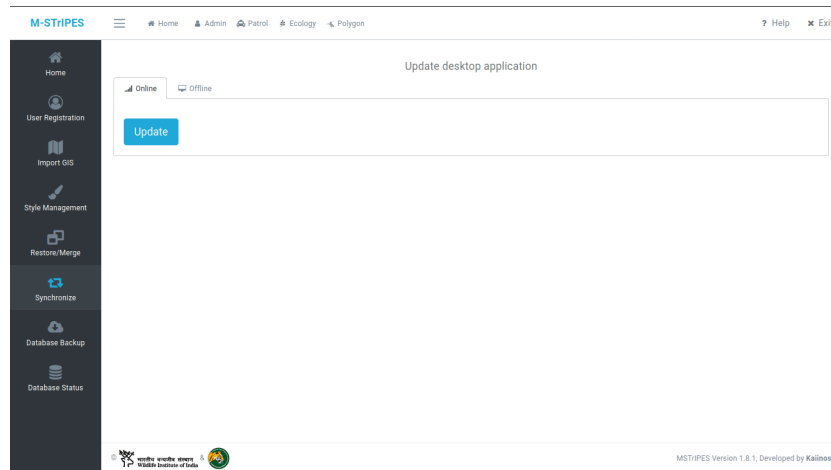


The screenshot shows the 'Import GIS' page in the M-STIPES application, specifically the 'Offline' tab. The sidebar is identical to the previous screenshot. The main content area is titled 'Import GIS' and has two tabs: 'Online' and 'Offline' (selected). Under the 'Offline' tab, there is a text prompt 'Select zip to import data' and a 'Choose' button. Below this are 'Upload' and 'Clear' buttons. The footer shows the M-STIPES logo, version 1.8.1, and 'Developed by Kaiinos'.

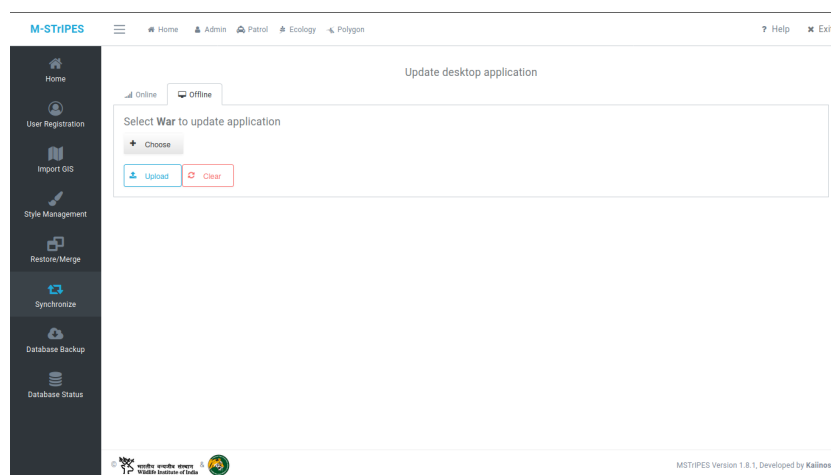
(b) Offline Import GIS

3.3 Software Update Check

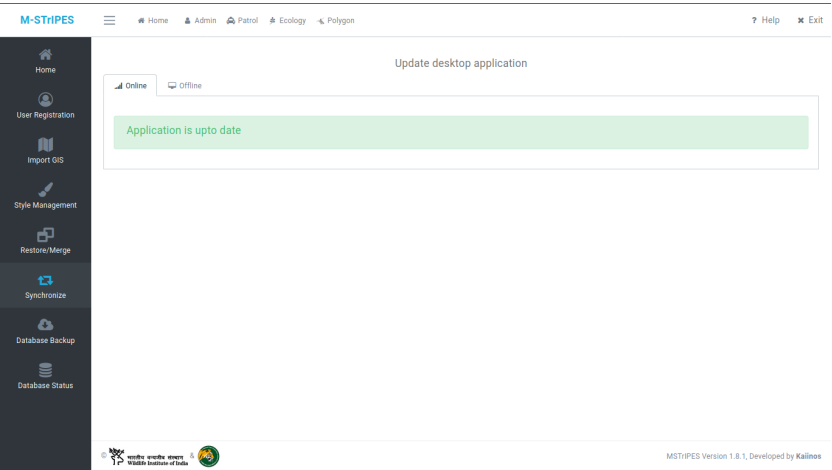
Check for any software updates by click on admin then click on synchronize to update the application through online or offline .



(a) Update Application Online



(b) Update Application Offline



(a) Upto date